

## URINALS

### Grated - Walk-On Urinal

Urinal with Walk-On Grate is designed by Stoddart to resist vandalism and corrosion for a long service life. It is designed for minimum maintenance and maximum water efficiency.

The grated urinal has full depth sides for superior hygiene. It is the most hygienic and effective urinal.



#### Models:

##### SPPL.UR.G.xy.zzzz

Code explanation:

SPPL = Standard Product Plumbing

UR = Urinal

G = Grated

x = T - top entry water supply

= R - rear entry water supply

y = L - left waste

= R - right waste

= C - centre waste (added extra)

= 2 - two wastes (one at each end)

zzzz = Length

eg.: for specification and ordering

SPPL.UR.G.RR.1800

#### Flushing Alternatives:



SPPL.USFV



SPPL.CI.PC

Options

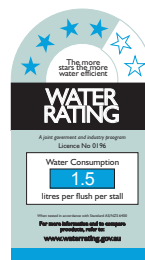
USFV.1: 0-1800mm

USFV.2: 1800-3600mm

USFV.3: 3600-5400mm

#### Features and Benefits:

- The grated urinal from Stoddart has full depth sides for superior hygiene.
- The urinal has a concealed vandal resistant sparge, which wraps around onto the side walls to ensure proper wash with each flush.
- Stoddart grated urinal is fully supported on legs for easy installation (no need to fill void under trough with slurry).
- The unit can be set into floor (recessed so the top grate is flush with floor), or set on floor (can be fitted with optional stainless steel front kick panel).
- Grate is high strength, slip resistant, hygienic stainless steel. Grate is hinged for cleaning access.
- All internal corners have large radius for cleaning ease and effective drainage.
- Fall to waste of 1:80 ensures proper drainage.
- Compressed fibre-cement backing provides 'anti-drum' noise suppression.
- Optional freestanding end panels are available.
- Long units can be made modular to avoid onsite welding.
- Top edge can have either returned edge or tile edge.
- No requirement to slurry fill under urinal trough.



Proudly Manufactured in Australia

Due to product research and development, the information contained herein is subject to change without notification

Data Sheet Revision Date 17/02/2016

#### Manufactured by:

Tom Stoddart Pty Ltd. ABN 16 009690251  
39 Forest Way, Karawatha 4117, Queensland Australia

#### Specifications:

- Construction:** Fully welded 1.2mm 304 stainless steel construction, no.4 satin finish.  
No requirement to slurry fill under urinal trough.
- Water Connection:** Top entries in  $\varnothing 25$ ,  $\varnothing 32$  and  $\varnothing 38$  dia.  
Rear entry in 25mm pressure pipe.  
Custom positions available by special order.  
Designed for WELS approved flush devices.
- Waste Connection:** 50mm for length <1800mm  
65mm for length 1800mm - 2400mm  
75mm for length 2400mm - 3600mm  
100mm for length >3600mm  
Positioned 430mm from rear wall and 190mm from side wall (end waste units).
- Unit Fixing:** Urinal has strong support legs - no need to fill under trough, ensure sewer pipe doesn't push up underside of urinal waste.  
Ensure top edges and front edge are installed level.  
Urinals with returned edge can be fixed to wall using supplied Z-clips.

#### Models:

##### SPPL.UR.G.xy.zzzz

Code explanation:

- SPPL = Standard Product  
UR = Urinal  
G = Grated  
x = T - top entry water supply  
= R - rear entry water supply  
y = L - left waste  
= R - right waste  
= C - centre waste (added extra)  
= 2 - two wastes (one at each end)  
zzzz = Length  
eg.: for specification and ordering  
SPPL.UR.G.RR.1800

#### Flushing Alternatives:



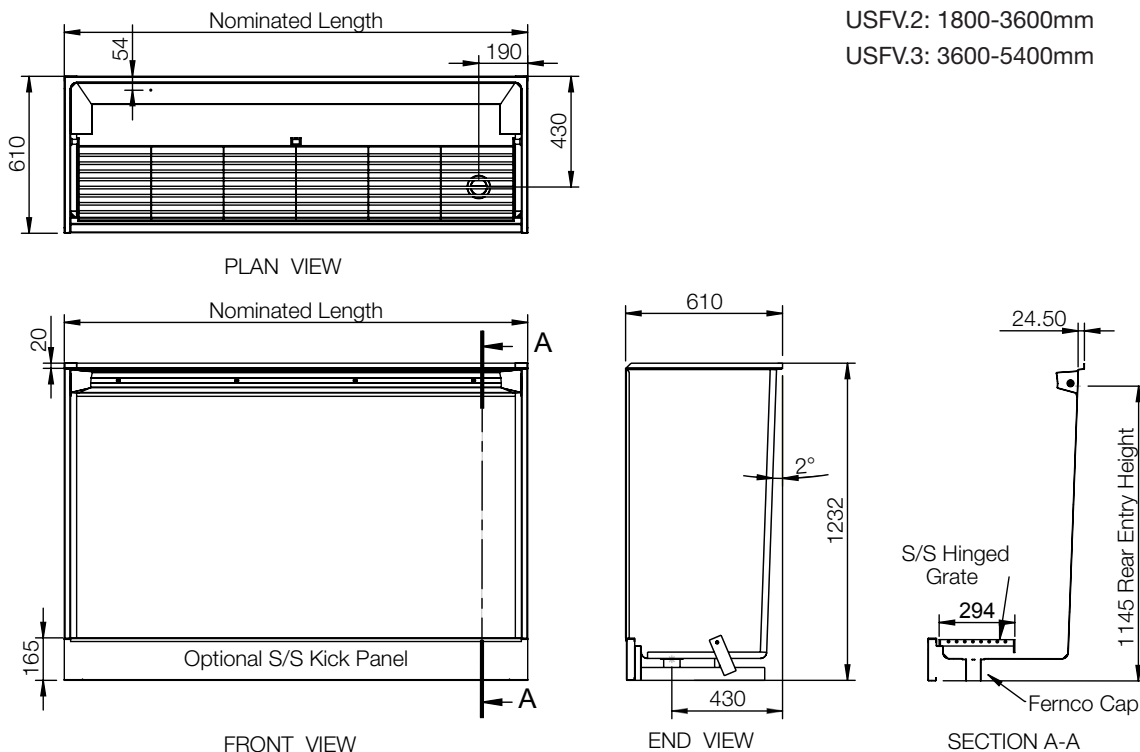
SPPL.USFV



SPPL.CI.PC

#### Options

- USFV.1: 0-1800mm  
USFV.2: 1800-3600mm  
USFV.3: 3600-5400mm



#### Manufactured by:

Tom Stoddart Pty Ltd. ABN 16 009690251  
39 Forest Way, Karawatha 4117, Queensland Australia